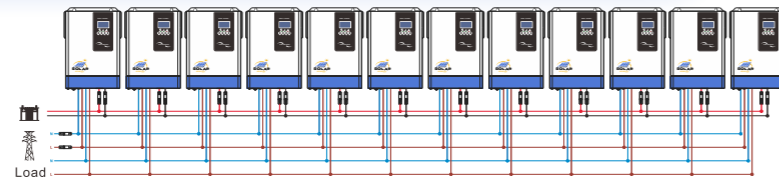
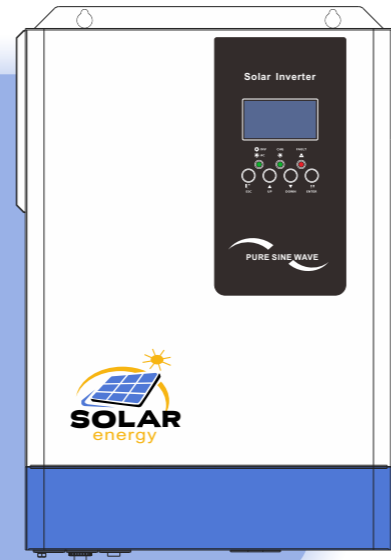


Hybrid Solar Inverter

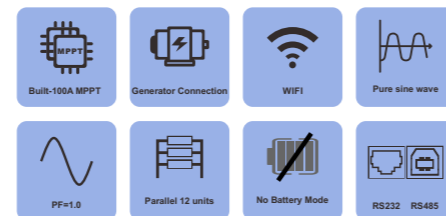
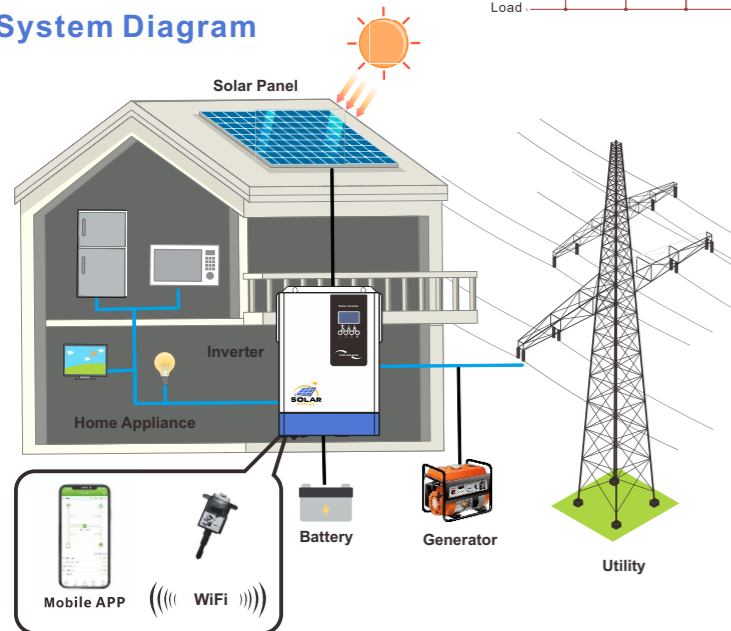
5.5KW-48V 220V / 230Vac Output

Product Features

- Pure sine wave
- Power factor 1.0
- PV input 500Vdc Max
- Built-in MPPT 100A
- Capable to work without battery
- Detachable dust cover for harsh environment
- WiFi remote monitoring optional
- Compatible work with lifepo4 battery
- Support multiple output priority: UTL, SOL, SBU, SUB
- Parallel operation up to 12 units in 1phase or 3phase
- EQ function to optimize battery performance and extend lifecycle



System Diagram



Technical Data

MODEL	T5500-48 Plus
Capacity	5.5KVA/5.5KW
Parallel Capability	YES,12 Units
INPUT	
Nominal Voltage	230VAC
Acceptable Voltage Range	170-280VAC(For personal Computer);90-280vac(For Home Appliances)
Frequency	50/60 Hz(Auto sensing)
OUTPUT	
Nominal Voltage	220/230VAC±5%
Surge Power	11000VA
Frequency	50/60Hz
Waveform	Pure Sine wave
Transfer Time	10ms(For personal Computer);20ms(For Home Appliances)
Peak Efficiency(PV to INV)	96%
Peak Efficiency(Battery to INV)	93%
Overload Protection	5s@>=150% load; 10s@110%~150% load
Crest Factor	3:1
Admissible Power Factor	0.6~1 (inductive or capacitive)
BATTERY	
Battery Voltage	48VDC
Floating Charge Voltage	54VDC
OverCharge Protection	63VDC
Charging Method	CC / CV
Solar Charger & AC Charger	
Solar Charger Type	MPPT
Max.PV Array Power	5500W
Max.PV Array Open Circuit Voltage	500VDC
PV Array MPPT Voltage Range	120VDC~450VDC
Max.Solar Input Current	18A
Max.Solar Charge Current	100A
Max.AC Charge Current	60A
Max.Charge Current	100A
PHYSICAL	
Dimensions,D x W x H(mm)	448x295x122
Package Dimensions,D x W x H(mm)	540x390x210
Net Weight(Kg)	10
Communication Interface	RS485/ RS232 / Dry-contact
ENVIRONMENT	
Operating Temperature Range	(-10°C to 50°C)
Storage Temperature	(-15°C ~ 50°C)
Humidity	5% to 95% Relative Humidity (Non-condensing)

Product specifications are subject to change without further notice.